

Federation  
Academy



RTO No: 52785 | CRICOS No: 03980A

## Course Outline

**CHC33021 Certificate III In Individual Support**

*Ageing and Disability*



# Course Information

Qualification Code	CHC33021
Qualification Name	Certificate III In Individual Support
Qualification Specialisation	Ageing and Disability
CRICOS Course Code	114735B
Duration in Weeks (38)	26 Study Weeks + 6 Holiday Weeks + 6 Vocational Placement Weeks = Total 38 Weeks
CRICOS Provider	#03980A
RTO Code	52785
Provider Name	Federation Academy
Delivery Location/s	<b>Brisbane</b>   Level 3, 160 Edward Street Brisbane Q 4000 <b>Adelaide</b>   Level 4 117 King William St, ADELAIDE, SA, 5000 <b>Cairns</b>   58-70 Lake St, CAIRNS CITY, QLD, 4870

## What is this course about?

The CHC33021 Certificate III in Individual Support (Ageing and Disability) is a Nationally Recognised Training qualification that provides you with the start of a promising career path into the Disability and Aged Care Sector. This course provides you with the knowledge and skills needed to seek employment as a support worker in both the aged and disability care industry. It combines theory with practical hands-on learning in the classroom as well as 120 hours of Industry Placement in an actual Care Facility.



# What do I get out of this course?

The Certificate III in individual support reflects the role of support workers in the community services industry who follow an individualised plan to provide dignity and support to ageing or disabled people who require assistance to maintain a high quality of life. The role involves using discretion and judgement in relation to supported individual as well as willingness to take responsibility for own outputs and maintaining the dignity and safety of the clients. Students will learn in demand skills including caring for the elderly, enabling them to maintain independence, understanding and supporting people with dementia, safety procedures, ethical behaviour, infection control, working with cultural diversity, and workplace health and safety.



This qualification is designed to reflect the role of employees who perform positions such as:

- Personal Care Assistant (PCA)
- Residential Support Worker
- Disability Care Support Worker
- Home Carer
- Aged Care Support Worker
- Agency Contract Carer

# What do I need to apply?

The following requirements apply to entry into this qualification:

## All Students

- Age 18+
- Completed high school Year 12, or equivalent.
- Willingness to obtain a National Police Certificate (NPC).
- Willingness to undertake a NDIS Worker Screening Check

## Additional Requirements - International Applicants:

- IELTS 6.0 or equivalent English proficiency
- Willingness to make a statutory declaration before starting industry placement that they have never:
  - » o been convicted of murder or sexual assault; or
  - » o been convicted of, and sentenced to imprisonment for, any other form of assault.
- This statutory declaration is in addition to a current national police certificate and NDIS Worker Screening clearance, as these contemplate only those convictions recorded in Australian jurisdictions.

Refer to the Federation Academy Enrolment Form for further information regarding possible enrolment requirements.



# Who is this course for?

This qualification has been designed to cater to the needs of a variety of student candidates, including but not limited to the following:

- CRICOS (international) candidates seeking to undertake a career in the community services sector as either an age or disability support worker,
- Adult learners, most learners are 18-45 years of age, but age is not limited in the target group
- Are interested in obtaining a future role as an Individual support worker in either Australia or their country of origin.
- Those who have an interest in working in the Ageing or Disability sector
- Those who have worked in the sector in other roles / allied roles

# What career path does this course follow?

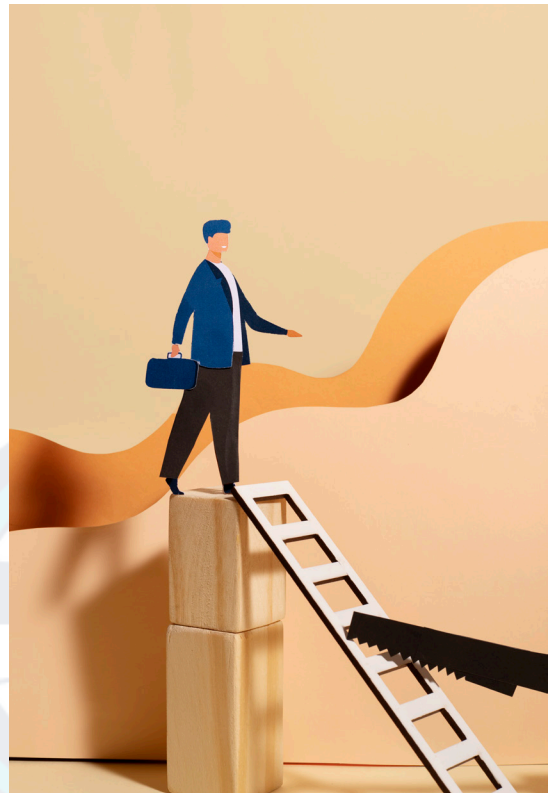
## Educational Pathways into the Qualification / Skill set

Student's pathway may include.

- Completion of grade 12 or equivalent
- Completion of previous courses such as:
  - » Certificate II in Community Services
  - » Certificate II in Health Support Services
  - » Certificate III in Allied Health Assistance

## Educational Pathways into the Qualification / Skill set

- Certificate IV in Community Services
- Certificate IV in Disability Support
  - » Certificate IV in Leisure and Health
  - » Diploma of Community Services
  - » Diploma of Leisure and Health
  - » Diploma of Community Development
- ◇ Advanced Diploma of Community Sector Management



# How is this course trained and assessed?

Training has been designed to be progressive and step-based to provide the skills and knowledge required to begin a career journey as a support worker in the community services sector. Training and assessment is conducted face to face in the classroom as well as through hands on practical sessions undertaken in a simulated workplace environment. In addition, all students will undertake 120 hours of Industry Placement in an actual Care Facility. This Industry Placement is arranged and monitored by Federation Academy. All students are required to attend class a minimum of 20 hours per week over the twenty- six (26) study weeks. All training material is available to students 24/7 on the Federation Academy LMS. All assessments are submitted and assessed via the LMS.

This qualification includes the required elective units for both the Age Care and Disability Specialisations. The program has been separated into Four (4) study blocks and the electives have been chosen to fulfil the packaging rules of the qualification in relation to both the Ageing (SA - 3 units) and Disability specialisation (SD- 3 units). Ongoing trainer support and training is provided by direct face to face contact with trainers and assessors thought out the training products delivery. Each trainer is also contactable by email to help students.

# Qualification Structure

C/E	Unit Code – Unit Title	Study Weeks
<b>Working with People</b>		
C	CHCCOM005 Communicate and work in health or community services	1
C	CHCDIV001 Work with diverse people	2
C	CHCCCS041 Recognise healthy body systems	2
C	HLTWHS002 Follow safe work practices for direct client care	1
C	CHCLEG001 Work legally and ethically	2
<b>Know your Industry</b>		
E/SD	CHCDIS020 Work effectively in disability support	2
E/SD	CHCDIS012 Support community participation and social inclusion	2
E/SA	CHCAGE013 Work effectively in aged care	2
E/SA	CHCPAL003 Deliver care services using a palliative approach	2
<b>The Support Workers World</b>		
C	CHCCCS031 Provide individualised support+ *	2
C	CHCCCS038 Facilitate the empowerment of people receiving support+ *	2
E/SD	CHCDIS011 Contribute to ongoing skills development using a strengths-based approach+ *	1
E/SA	CHCAGE011 Provide support to people living with dementia+ *	2
C	HLTINF006 Apply basic principles and practices of infection prevention and control+ *	1
<b>The Work placement Experience</b>		
C	CHCCCS040 Support independence and wellbeing+	8
<b>Total Study Weeks Including Industry Placement</b>		<b>32</b>
<small>Pre-Requisite = P   Core = C#   Elective = E#   Specialisation Elective =E/S A(Ageing) or D (Disability)  + = Units partially co-delivered and assessed during Industry Placement Weeks   * indicates units with Assessment activities that need to be completed in the workplace with no set hours. These workplace-based assessment activities have been incorporated in the CHCCCS040 mandatory 120 hours of Industry Placement.</small>		

