



RTO No: 52785 | CRICOS No: 03980A

INTERNATIONAL PROSPECTUS

BRISBANE | ADELAIDE



INDEX

	Page
Welcome Message	3
About Federation Academy	4
Courses	5
Campus Location: Brisbane	6
Campus Location: Adelaide	7
Campus Facilities	9
Why study at Federation Academy	10
International Student Guide	13
Support Services in Australia	14
Studying at Federation Academy	16
Entry Requirements	18
Application process	19



Welcome Message

Welcome to the Federation Academy, where learning knows no boundaries and excellence is our guiding star. As you step into our institution, you are embarking on a journey of discovery, growth, and transformation. Our dedicated faculty and staff are committed to providing you with an enriching and nurturing environment, fostering not just academic success, but also personal development.

At Federation Academy, we believe that education is a holistic experience. Beyond the classrooms, you'll find a vibrant tapestry of opportunities awaiting you. From state-of-the-art facilities to a wide range of extracurricular activities, there's something for every passion and interest. We encourage you to immerse yourself fully in the rich tapestry of knowledge, collaborative learning, and character-building that our academy has to offer.

As you become a part of our close-knit community, you'll find yourself surrounded by fellow learners who are driven, curious, and eager to make a positive impact. Your presence enriches our diverse tapestry, and we are excited to see the unique contributions you'll bring to our Federation family. So, here's to the start of a remarkable educational journey – welcome to the Federation Academy!



About Federation Academy

Founded in 2016 & now head quartered in Brisbane (QLD), Federation Academy has undergone a transformative rebranding to deliver a modern and dynamic educational experience. Our logo, inspired by a nautical compass symbolizing our commitment to embracing diversity and charting new paths in education.

At Federation Academy, our mission is clear: to provide innovative training environments, opportunities, and experiences that enable individuals, communities, and the region to rise above the rest.

Our team comprises of highly experienced and qualified trainers, educational content writers, learning professionals & more who are dedicated to nurturing the talents of our students. We passionately believe that learning should be practical, enjoyable, and relevant to real world scenarios. As such, our courses integrate hands on training and immersive experiences, ensuring that our students are well-prepared for success in the industry.

How to contact us

QLD: Level 3/160 Edward St, Brisbane City, QLD 4000

SA: Level 4/117 King William Street, Adelaide, SA 5000

Postal Address: GPO Box 1609, Brisbane City, QLD 4001

Contact No. : 1300 202 266

Email : info@federationacademy.edu.au

Website : <https://federationacademy.edu.au/>



Courses

Information Technology Course

Course Name	Course Code	CRICOS Course code	Duration	Campus	Delivery mode	Vocational placement
Information Technology						
Advanced Diploma of Information Technology (Telecommunications network engineering AND Cyber security)	ICT60220	113936A	92 Weeks	Brisbane & Adelaide	Face-to-Face	Nil

Engineering Course

Course Name	Course Code	CRICOS Course code	Duration	Campus	Delivery mode	Vocational placement
Civil Construction Design						
Advanced Diploma of Civil Construction Design	RII60520	113935B	92 Weeks	Brisbane & Adelaide	Face-to-Face	Nil

Hospitality Courses

Course Name	Course Code	CRICOS Course code	Duration	Campus	Delivery mode	Vocational placement
Kitchen Mangement						
Certificate IV in Kitchen Management	SIT40521	109620M	78 Weeks	Brisbane & Adelaide	Face-to-Face	360 Hours
Diploma of Hospitality Management	SIT50422	113464F	93 weeks	Brisbane & Adelaide	Face-to-face	200 hours
Package Course	TBA	TBA	93 weeks	Brisbane & Adelaide	Face-to-face	360 hours

Why study at Federation Academy

Achieve Global Student Excellence by Training with a World-Class Team

At Federation Academy, you can become a globally competitive student while training under a world class team. Our courses are nationally recognized under the VET Quality Framework, ensuring that our ability to serve international students aligns with other top educational institutions globally.

Our trainers are qualified educators, experienced professionals, and industry experts, committed to enhancing their expertise through research, training, and further studies. Join us at Federation Academy to confidently pursue your studies with the assurance of quality and excellence.

Thriving in a Diverse and Multicultural Academic Setting

Immerse yourself in a diverse student body, fostering a multicultural setting that nurtures learning and growth. Our strategically positioned campuses offer innovative amenities and are staffed by seasoned industry mentors, ensuring your journey towards career excellence reaches its zenith.

Accessible Online Student Support and Resources for Your Needs

You will have direct access to our specialised student support team throughout your course for any assistance you require. This team will keep track of your progress and is readily available for your queries and concerns.

In addition, you will benefit from the Learning Management System (LMS), a convenient online portal offering access to all available resources. Whether you are off-campus or after class hours, the LMS empowers you to continue your studies anytime, anywhere.

Dedicated Training Centres for Our Offered Courses

Constantly enhancing the student learning experience, our campuses undergo continuous upgrades, incorporating specialised training facilities to cater to evolving educational needs and provide an enriched environment for growth.

Flexible Payment Choices:

Full Payment: Pay upfront via EFT or MasterCard/ Visa.

Payment Plan: Monthly, or per semester.

Direct Debit: Scheduled withdrawals from your bank.

Contact for details:

info@federationacademy.edu.au

We will help you on your pathway to university

Embrace greater ambitions and set your sights higher through the possibilities you will uncover in your studies here.

Upon accomplishing the Cert III, Cert IV, Diploma, and Advanced Diploma programs at Federation Academy, students are eligible to seek credit transfers/exemptions and recognized prior learning (RPL) with affiliated Federation Academy or external pathway partners.





Campus Location: Brisbane (QLD)

Brisbane campus:

Brisbane, the capital city of Queensland, Australia, is a vibrant and culturally diverse city known for its stunning landscapes, pleasant climate, and outdoor recreational opportunities. The city is home to numerous attractions, including the South Bank Parklands, the Brisbane River, and the iconic Story Bridge.

Brisbane boasts a thriving arts and entertainment scene, with numerous galleries, museums, and theaters. The city's culinary offerings are diverse, with a range of restaurants and cafes offering delicious cuisine from all over the world. Additionally, Brisbane hosts various festivals and events throughout the year, contributing to its lively atmosphere and sense of community.



Studying in Brisbane :

Nestled in Queensland, Australia, Brisbane stands as a dynamic and multicultural hub, drawing in a global community of scholars. This sought-after destination captivates international students annually with its exceptional educational opportunities. The city boasts a rich tapestry of academic institutions, among them Federation Academy, renowned for its quality education.

Brisbane extends a warm welcome to students, offering a blend of education and comfort. Financial ease is prioritized through student centric initiatives. The Go card concessions, which provide reduced travel fares, alleviate financial stress, enabling students to embrace the city and its outskirts. Further enhancing accessibility is the free loop bus service for students.





Campus Location: Adelaide (SA)

Adelaide Campus:

Adelaide, the capital city of South Australia, stands as a dynamic and culturally rich metropolis celebrated for its picturesque surroundings, delightful climate, and ample outdoor leisure pursuits. The city plays host to a plethora of attractions, including the expansive Adelaide Parklands, the meandering Torrens River, and the iconic Adelaide Oval.

Embracing a thriving artistic and entertainment scene, Adelaide is home to a multitude of art galleries, museums, and theaters. The city's gastronomic offerings are a tapestry of diversity, with a wide array of eateries and coffee shops serving delectable dishes from around the globe. Furthermore, Adelaide plays host to an array of festivals and events year-round, contributing to its vivacious ambiance and strong communal spirit.



Studying in Adelaide :

Adelaide, a dynamic and culturally diverse city in South Australia, has emerged as a favored choice for global students pursuing excellent education opportunities. Each year, a multitude of students from across the globe select Adelaide as their preferred destination for studying abroad. The city is also home to a diverse array of reputable educational institutions such as Federation Academy.

The city presents a welcoming environment for students, coupled with a range of perks and advantages designed to alleviate the financial challenges faced by international scholars. The Adelaide Metrocard concessions offer reduced fare rates for public transportation, rendering city exploration and nearby area visits more economical and accessible for students.

Campus Facilities

Student Support & Services:

For queries and assistance, Student Administration is easily accessible in person, through phone, or email: info@federationacademy.edu.au



Charging Stations and Breakout Areas:

The campus has ample charging stations for laptops and mobile phones. Students can charge their devices in the breakout room, reception & classroom desks if it runs out of battery power.



Library Resources and Services:

Access digital resources via the LMS and borrow physical materials through student services, following guidelines in the student handbook.



Campus-wide Connectivity:

Benefit from free Wi-Fi and continuous online access to learning resources and assessments via the Learning Management System (LMS). Access assistance at the reception desk.



Comprehensive Training Facilities:

The Brisbane campus hosts theory-based sessions at Level 2, 160 Edward St and offers practical training in well-equipped workshops across the city.



“Education is the most powerful weapon which you can use to change the world”
– Nelson Mandela



An International Student guide to living in Australia

Australian Culture

Language: Australia is a linguistic blend, with English being the dominant language, reflecting its pre federation history and multicultural society.

Climate: The diverse climate ranges from tropical in the north to temperate in the south, offering outdoor activities and stunning landscapes.

Culture: Australian culture is marked by its laid-back attitude, sports enthusiasm, Aboriginal heritage recognition, and vibrant arts scene.

Transportation: Efficient public transport systems and a love for road trips characterise Australian transportation, fostering exploration and connection.

Food: A fusion of global cuisines, fresh seafood, barbecues, and love for Vegemite showcase Australia's unique and diverse culinary identity.

Student Housing: Accommodation options for students range from shared apartments to university dorms, providing a comfortable and inclusive living experience.

Living costs

Understanding the average expenses in Australia is vital when planning your study journey there. These estimates are a general reference, with potential variations based on your Australian study destination.

For a more personalised assessment, the 'Insider Guides Cost of Living Calculator' can be a valuable resource:

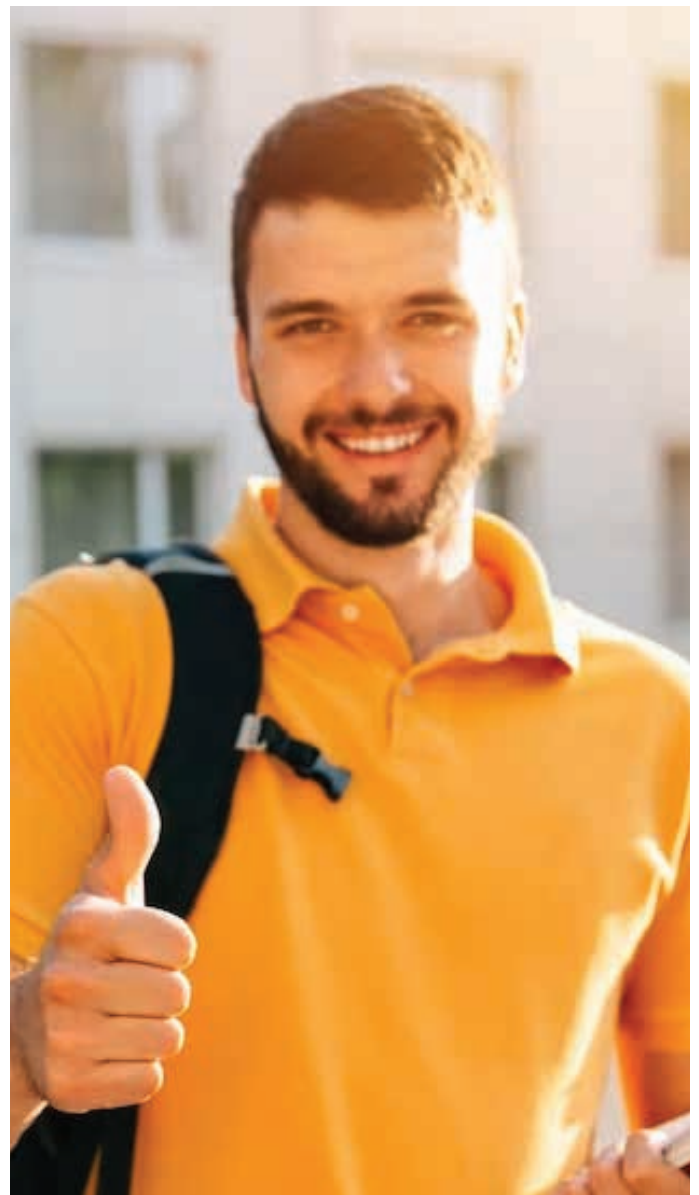
<https://insiderguides.com.au/cost-of-living-calculator/>

Other information on living in Australia

Visit, Study Australia's official website (<https://www.studyaustralia.gov.au/>) for comprehensive details on living and studying in the country, covering academics, lifestyle, events, and activities.

Living Expense

Groceries and eating out:	A\$80 - A\$150 per week
Public transport:	A\$30 - A\$60 per week (varies by city)
Electricity, water, gas:	A\$35 - A\$140 per week
Internet	A\$20 -A\$50 per month per week
Entertainment	\$80 - \$150 per week



Accommodation

When preparing to study in Australia, international students must decide on their living arrangements. Most Australian students opt for off-campus living, choosing from home stay programs, hostels, or rentals. While Federation Academy does not offer accommodation, our representatives can assist in connecting students to providers, including home stays and student housing. A placement fee of AUS\$250 applies. Kindly notify the college at least 14 days (about 2 weeks) in advance if you need our staff to arrange accommodation for you.

Here are some websites for finding accommodation

1. <https://www.realestate.com.au/>
2. <https://flatmates.com.au/>
3. <https://www.yha.com.au/>
4. <https://www.airbnb.com.au/>
5. <https://www.domain.com.au/>

Accommodation types

Student accommodation	<ul style="list-style-type: none">• Cost: \$250 – \$400 per week• Type: Apartment or bedroom units• Location: Usually near the university campus• Recommended stay: Medium
Home stay	<ul style="list-style-type: none">• Cost: \$235 – \$325 per week• Type: House• Location: Usually in the city center• Recommended stay: Short
Hostels and Guesthouses	<ul style="list-style-type: none">• Cost: \$90 – \$150 per week• Type: Hostels and discounted hotels• Location: Usually in the city center• Recommended stay: Short
Rentals	<ul style="list-style-type: none">• Cost: \$150 – \$440 per week• Type: Apartments, units, or house• Location: Can be city center can be near by• Recommended stay: Long



Student accommodation



Home Stay



Hostels and Guesthouses



Rentals

Support Services in Australia

Australia offers a safe and welcoming environment for living and studying. To ensure a happy stay, familiarize yourself with your surroundings.

EMERGENCY – Dial 000

Dial Triple Zero (000) for emergency ambulance, fire brigade, or police assistance. In life threatening situations like fires or accidents, specify your language for a translator.

Support service	How they can help you	Contact information
Australian Consumer Law	Understand your legal rights regarding shopping or purchasing services.	https://consumer.gov.au/
Australian human right commission	If you feel you are being treated unfairly because of your race, descent, color, or ethnic/national origin then make a complain to the Australian Human rights commission.	https://humanrights.gov.au/
Australian taxation office	Contact them to arrange a Tax file number or learn more about payments made to you while you are here.	https://www.ato.gov.au/
Beyond Blue	A free counselling service that you can contact if you are feeling depressed or anxious.	1300 224 636 https://www.beyondblue.org.au/
Lifeline	If you need someone to talk to about your mental health, this resource is a crisis support hot line.	131 114 https://www.lifelineqld.org.au/
Brisbane student Hub	Provides information, advice and referrals on healthcare, employment, budget management, accommodation, and legal services, as well as connecting student to local events and activities.	https://qldstudenthub.qld.gov.au/
Department of Foreign Affairs and trade (for Embassies)	If you require help from your country's embassy withing Australia.	https://www.dfat.gov.au/
Commonwealth Ombudsman	This ombudsman can help you in dealing with problems with private institutions and education providers.	https://www.ombudsman.gov.au/
Tuition protection service	It is a government initiative if your institution could not deliver your course of study, then government either help you in completing course elsewhere or help you in getting refund of uncompleted studies.	https://www.education.gov.au/tps
Fair work Ombudsman	If you require assistance understanding your workplace rights and responsibilities.	13 13 94 https://www.fairwork.gov.au/
Residential tenancies authority	If you have any issues with accommodation or would like to know what your rights are.	https://www.rta.qld.gov.au/
Road transport authority	If you plan to drive in Brisbane, then find out about the road rules and what you need to get yourself into a car.	https://www.tmr.qld.gov.au/

TRANSLink (QLD)	To find out about trains, buses, and ferries, including ticketing information timetable and more in Queensland.	13 12 30 https://translink.com.au/
Study Brisbane	For information on living and studying in Brisbane. They also host events for international students throughout the year.	https://choose.brisbane.qld.au/
National sexual assault, Domestic Family Violence Counselling Service	If you have been sexually assaulted and require information and support services that are available.	1800 737 732 www.1800respect.org.au/
Alcohol and drug information	24/7 support for people in Queensland with alcohol and other drug concerns.	1800 77 833 https://adis.health.qld.gov.au/

QUEENSLAND HOSPITALS

Mater hospital	(07) 3840 8111 https://materhillfamilymedicalcentre.com.au/
Prince Charles Hospital	(07) 3139 4000 https://metronorth.health.qld.gov.au/tpch/
Royal Brisbane Hospital	(07) 3646 8111 https://metronorth.health.qld.gov.au/rbwh/
QE II Hospital	(07) 3275 6111 https://metrosouth.health.qld.gov.au/qeii-jubilee-hospital
Wesley Hospital	(07) 3232 7000 https://www.wesley.com.au/
Logan Hospital	(07) 3299 8899 https://metrosouth.health.qld.gov.au/logan-hospital
Gold Coast Health	(07) 5519 8211 https://www.goldcoast.health.qld.gov.au/

SOUTH AUSTRALIA HOSPITALS

Royal Adelaide Hospital	(08) 7074 0000 https://www.rah.sa.gov.au/
The Queen Elizabeth Hospital	(08) 8222 6000



Studying at Federation Academy

Policies and Procedures

Relevant policies and procedures are conveniently accessible to students via the Federation Academy website at <https://federationacademy.edu.au>. These policies cover a range of important aspects, including:

- Refund Policy
- Critical Incident Policy/Procedure
- Transfer Between Providers Policy and Procedure
- Complaints and Appeals Policy
- Monitoring Course Progress Policy and Procedure
- Attendance Policy and Procedure
- Deferral, Suspension, and Cancellation Policy and Procedure
- Student Academic and General Code of Conduct Policy
- Credit Transfer and Recognition of Prior Learning Policy
- Student Payments Policy
- Privacy Policy
- Fee and Payment Policy

Working in Australia

During the course term, students can work up to 48 hours per fortnight. During holidays, full-time work is allowed.

Australia guarantees workplace rights, including pay and conditions, for all workers. The Fair Work Ombudsman ensures these rights are upheld under Australian workplace laws. Check the Fair Work fact sheet:

<https://www.fairwork.gov.au/tools-and-resources/fact-sheets>.

Financial Capacity

Students must keep payments current and possess ample funds for their studies and living expenses in Australia, including travel, tuition, dependent schooling, and living costs.

Overseas Health Insurance

Students in Australia are required to possess and maintain Overseas Student Health Cover (OSHC) throughout their stay to ensure medical and hospital coverage in case of accidents. OSHC is available from various providers for monthly payments and covers up to five years. Visit: https://www.health.gov.au/resources/publications/overseas-student-health-cover-oshc-fact-sheet?language=en_for_more_information.

Up-to-Date Contact Details

Students must promptly update Federation Academy regarding any changes to their information, including contact details, residential address, passport, and emergency contacts, within 7 days of the change.



Orientation

Orientation precedes course start, aiming to acquaint new students with Federation Academy's study essentials. It covers course details, safety, and attendance. We closely monitor progress to ensure success, intervening if issues arise. Reach out to Student Administration for timely support.

Unique Student Identifier (USI)

International students in Australia need a Unique Student Identifier (USI). It's only obtainable after arriving in Australia with a non-Australian passport and an Australia Visa. A USI is necessary for nationally recognized training; without it, qualifications and statements of attainment won't be issued.

Class Schedule, Mode of Study & Assessment

Classes, held Monday to Friday, on-campus, may vary in schedule and span a maximum of five days weekly. Lecture times range from 8:30 am to 9:30 pm. Timetables, shared during orientation, could change unexpectedly. Refer to the academic calendar on www.federationacademy.edu.au for holidays and intake dates.

For on-campus students, learning involves lectures, group discussions, case studies, excursions, projects, administration tasks, and possibly vocational placement. See student handbook and course details for study methods and assessment specifics.



Additional Administrative Fees

On addition to the enrolment and tuition fees, the following administrative fees and charges apply:

Description	Amount \$AUD
Enrolment Fee (non-refundable)	\$250
Interim transcript	1 st copy free, thereafter \$50
Change of commencement date / deferral of the course	\$250 or; Free to the applicants due to delayed visa processing, and caused by serious medical illness
Change of course	\$250
RPL application and information collection	\$250 administration fee
Credit Transfer	\$250 administration fee
Qualification and final transcript	1 st copy free, thereafter \$50
Statement of attainment	1 st copy free, thereafter \$50
Late assessment fee (theory) due to non-submission on due date (with no evidence of medical or other compelling reasons)	\$150 per unit
Re-sit assessment item (theory / practical assessment – after 2 free resit opportunities)	\$150 per day \$600 per day (for Kitchen Management)
Late payment of fees	\$50 per week
Replacement of textbook and/or learning materials	As applicable
Accommodation placement fee	\$250
Airport pickup fee	\$250

Note: All administrative charges are subject to change and review

Material fees will vary according to the course being undertaken and covers the cost of materials and other incidentals



"The purpose of education is to turn mirrors into windows."
— Sydney J. Harris



Entry Requirements

Entry requirements aim to ensure that individuals entering a Nationally Accredited Program possess the necessary skills for academic success. Certain courses might have higher prerequisites; refer to course brochures. Outlined are the entry prerequisites for international students planning to study at Federation Academy, including a minimum age of 18 at course commencement.

Academic Requirements

- A candidate must be a minimum age of 18 years at the time of course commencement.
- Submit copy of minimum Year 12 or equivalent qualification or AQF Certificate III / IV or higher
- * Students may need to undertake a English Placement Test & Pre-training review (PTR) process

**Applicable for students who fall under the SSVF Matrix (based on the risk rating of Federation Academy and student nationality)*

English Requirements

- International students applying either off-shore or on-shore will require:
- Either a minimum test score of: IELTS- 5.5, TOEFL IBT 46-59, PTE 43-50
- IELTS score of 5.0 or equivalent with an ELICOS course (up to 10 weeks) to be taken before the main VET course, or
- IELTS score of 4.5 or equivalent with an ELICOS course (up to 20 weeks) to be taken before the main VET course.
- Results older than two years are not acceptable.

OR

- To provide evidence that they have studied in English for at least five years in Australia, Canada, New Zealand, Republic of Ireland, South Africa, United Kingdom or United States

OR

- Evidence that, within two years of their application date, they have completed an Australian senior secondary certificate of education. Alternatively, they may provide evidence that they have successfully completed a relevant Foundation Skills course or a substantial part of a Certificate IV or higher-level qualification, from the Australian Qualifications Framework.

For more information on entry requirements, please visit: <https://federationacademy.edu.au>



Credit Transfer / Recognition of Prior Learning (RPL)

To qualify for credit transfer, you need to provide evidence of previously completed units/qualifications. Credit transfer applications should include completed competencies, course duration, and proof of completion (certificate, transcript, or statements of attainment).

RPL assesses acquired competence from formal and non-formal experiences to determine unit eligibility. Both credit transfer and RPL applications are evaluated individually.

To apply for credit transfer/RPL, mark the appropriate box on your enrollment form. After enrolling, request a credit transfer/RPL application form from student services at your campus.

For more information visit our website:

<https://federationacademy.edu.au/>

Computer Requirements

To succeed at Federation Academy, students should meet the following technical prerequisites for our Online Learning System:

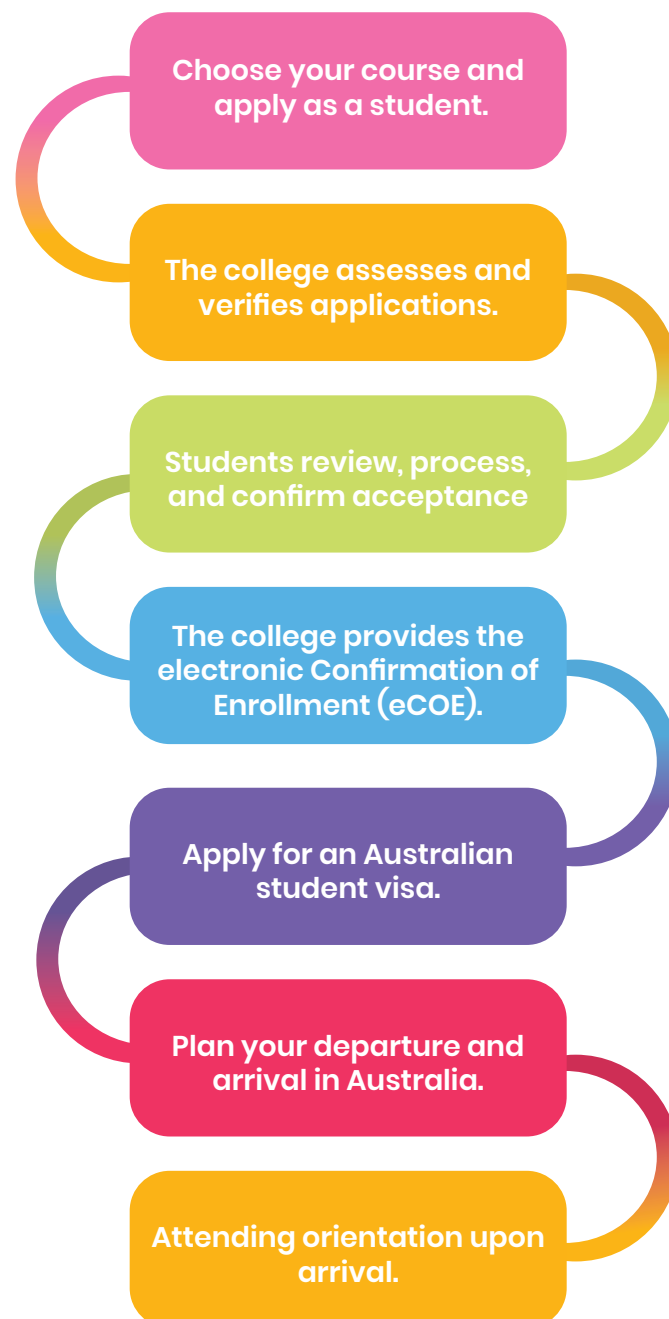
- Students should have access to a fully charged laptop on class days.
- **For Windows:** Windows 10, minimum 4GB RAM.
- **For Mac:** Mac OS X 10.13 or newer.
- Availability of word processing software like Microsoft Word.
- Stable and reliable internet connection.

Contact us for more information:


info@federationacademy.edu.au

Application Process

Applying to study at Federation Academy offers two options: you can apply directly by completing our form, or via our endorsed agents. These agents aid in enrollment and visa application, streamlining the process.






 1300 20 22 66

 www.federationacademy.edu.au

 info@federationacademy.edu.au

 Level 3/160 Edward St, Brisbane City, QLD 4000
Level 4/117 King William Street, Adelaide, SA 5000

 GPO Box 1609, Brisbane City, QLD 4001

Join Us Today

   @federationacademy

Federation Academy is the trading name of Federation Academy Australia Pty Ltd.
RTO No: 52785 | CRICOS No: 03980A | ABN 24 169 939 100 | Version: 2023.1

DISCLAIMER

All images used in the publication are purely for advertising purposes only do NOT reflect any student, staff, location/s or services of Federation Academy. The images used are either purchased or royalty free.
All information in this document was correct at the time of publication but is subject to change. However in the event of any concern or queries, Please contact info@federationacademy.edu.au